

A photograph of a modern living room with large windows. The view outside shows a city skyline at sunset with mountains in the background. A brown armchair is positioned in front of the windows, and a coffee table is in the foreground. The text 'CONFIDENCE IN EVERY CONDITION' and 'METROVIEW® 4-SSG WINDOW WALL' is overlaid on the bottom left of the image.

CONFIDENCE IN EVERY CONDITION

METROVIEW® 4-SSG WINDOW WALL

The MetroView® 4-SSG Window Wall is an advanced window wall system from Kawneer, engineered to meet stringent performance requirements across North America. Ideal for multifamily buildings, condominiums, hotels and more, the MetroView® 4-SSG Window Wall combines high performance for all regions with sleek aesthetics in a unitized, slab-to-slab construction.

OPTIMAL PERFORMANCE FOR ANY REGION

Engineered for high-performance buildings, this structural silicon glazed window wall system wall delivers exceptional thermal efficiency to support compliance with the latest regional energy codes. The MetroView® 4-SSG Window Wall achieves U-factors as low as 0.20 to 0.35, providing superior thermal control. Optional slab-edge covers allow up to 3" of added insulation, enhancing thermal performance, improving energy efficiency and reducing thermal transmission.

In addition to thermal efficiency, the MetroView® 4-SSG Window Wall provides acoustic performance, a critical benefit for multifamily and urban environments. The system reduces exterior and interior noise transference with a Sound Transmission Class (STC) rating of up to 40.

The MetroView® 4-SSG Window Wall is engineered for use in hurricane-prone regions and has been designed for impact testing in accordance with Florida Product Approval (FPA) and Texas Department of Insurance (TDI) requirements. The system is also designed to meet seismic performance requirements, providing resiliency in earthquake-prone regions.

Additionally, superior air and water performance positions the system as a market leader in energy efficiency and long-term durability.



SLEEK AESTHETICS, UNINTERRUPTED VIEWS

The MetroView® 4-SSG Window Wall accommodates large uninterrupted glass panels, delivering a minimalist, all-glass appearance with slab-to-slab construction. The system supports the largest glass sizes of any Kawneer window wall – up to 5' wide and 14' tall – maximizing natural light and reducing reliance on artificial lighting to lower utility costs. In addition to providing expansive views to building occupants, the system allows glass to be positioned at the front to optimize the building's usable interior space. As a result, the MetroView® 4-SSG Window Wall allows architects to achieve the clean aesthetics of a curtain wall system combined with the practical benefits of a window wall system.

EFFICIENT INSTALLATION

As a unitized system, the MetroView® 4-SSG Window Wall streamlines installation by allowing interior installation with minimized wet sealing, reducing time spent on the job site. Requiring fewer steps to install, Kawneer's 4-sided structural silicone glazed window wall helps glaziers meet tight deadlines and minimize on-site labor.

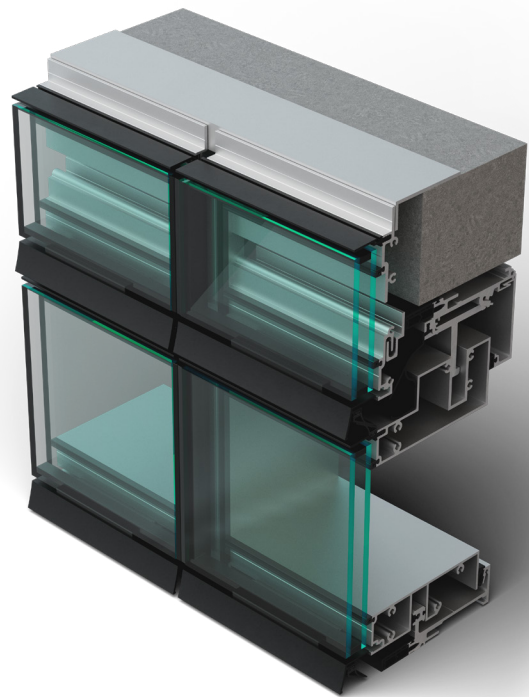
SUSTAINABILITY

Delivering a powerful combination of thermal efficiency, optimized daylighting and air/water performance, the MetroView® 4-SSG Window Wall system helps reduce a building's energy consumption and operational carbon. The MetroView® 4-SSG Window Wall supports sustainable design with low-carbon aluminum, containing at least 50% recycled content and the remainder sourced from a hydroelectric or clean energy smelter.

SEAMLESS INTEGRATION

This system offers design versatility and proven compatibility, pairing efficiently with other Kawneer solutions to create an integrated, single-source facade. These compatible products include balcony entrances such as 2000T Terrace Doors and GLASSvent® UT (Ultra Thermal) Windows. The window wall can additionally be combined with zero-sightline custom vents in casement and projected configurations.

With no compromise between aesthetics and performance, MetroView® 4-SSG Window Wall is a true single-source solution for a wide range of building projects across North America.



PRODUCT HIGHLIGHTS

- 2.5" sightline
- 5.5" mullion depth
- Designed to meet the latest seismic requirements
- Will be hurricane impact tested in late 2026
- Overall frame U-factor as low as 0.20 - 0.35
- High thermal efficiency with optional added insulation at slab edge
- STC up to 40, based on tested configurations
- Unitized, inside glazed system for faster installation
- Supports large glass sizes up to 5' x 14'
- Seamless integration with Kawneer systems
- Built with low-carbon aluminum